



WORKSHOP»

CLIMATE EMERGENCY: CAPITALISM'S FAILURE

DATE: Friday, September 27, 2019

TIME: 4:00PM – 5:30PM (support group following)

LOCATION: 246 Greene Street, New York, NY 10003

New York University, Kimball Hall, 1st Floor

Interpretation available upon request.

Venue is wheelchair accessible.

Capitalism is incompatible with restoring the environment. Perpetual growth, greed and overconsumption of the world's resources are inherent to capitalism and key drivers of the climate emergency. Can we intentionally envision and set the conditions for a radical transition to a just and sustainable economy? Can we create an economic system that values human connection over consumption, stands against oppression, and reconnects with the natural world? Living in capitalism leaves most people with internalized attitudes of consumption and profiting that undermine our work toward a new economy. Understanding the limitations to our thinking and action that result from the internalization of the attitudes of capitalism is a necessary step in addressing the climate emergency and the transition to a next economy.

In this workshop we will:

- ★ Express our own efforts to free our thinking from the internalized attitudes of capitalism and listen to others share their struggles,
- ★ Learn the approaches used by Sustaining All Life and United to End Racism to heal from these attitudes and the emotions we experience in reaction to the climate crisis,
- ★ Learn tools to take back to our home communities and organizations to increase our effectiveness in working toward a new economy.



Sustaining All Life



SustainingAllLife.org



UnitedToEndRacism.org



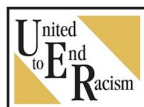
fb.com/SustainingAllLife

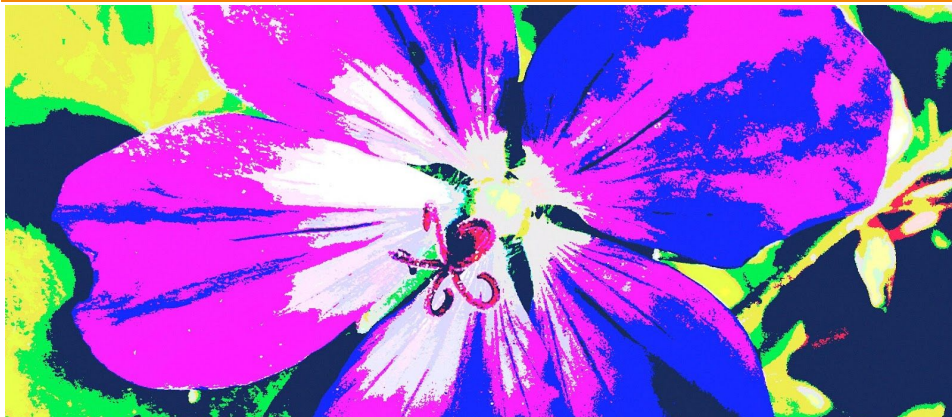


@SustainAllLife



@sustain_all_life





THE WORK OF SAL & UER

It is possible to limit the effects of human-caused climate change and restore the environment, but some very large changes in our economy and the lives we live are needed for this to happen.

Sustaining All Life (SAL) and United to End Racism (UER) believe the environmental crisis cannot be resolved without ending racism, genocide toward Indigenous peoples, classism, sexism, and other oppressions.

We believe that the barriers to building a large and powerful movement sufficient to make the needed changes include (1) longstanding divisions (caused by oppression, and especially racism and classism) between nations and between groups of people, (2) widespread feelings of discouragement and powerlessness, (3) denial of or failure to engage with the escalating damage to the earth's climate, and (4) difficulties in effectively addressing the connections between the environmental crisis and the failures of our economic system.

The mental and emotional harm done to us by oppression and other hurtful experiences interferes with our ability to think clearly and sets groups of people against each other. In SAL and UER we have learned that it is possible to free ourselves from these hurts and address barriers to effective organizing. By taking turns listening to each other and encouraging emotional release, people can heal from the mental and emotional harm and become better able to think, speak out, and organize and lead others in building a sustainable world. SAL and UER are projects of and use the tools of Re-evaluation Counseling, which currently exists in 95 countries.



Sustaining All Life

For more information, see:

www.sustainingalllife.org or www.unitedtoendracism.org

or write: Sustaining All Life/United to End Racism

719 Second Ave. North, Seattle, WA 98109, USA

Email: ircc@urc.org Tel: +1-206-284-0311

